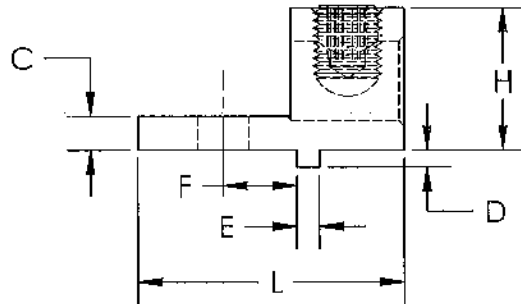
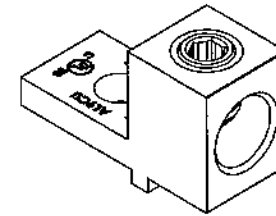
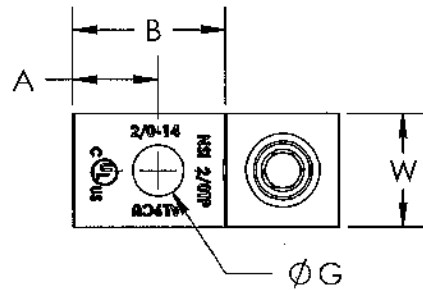


NSI PART #	WIRE RANGE AL/CU	HEX SIZE	L	H	W	A	B	C	D	E	F	Ø G	MAX TIGHTENING TORQUE IN/LBS
2/0TP	2/0 - 14	3/16"	1.47	1.13	.88	.47	.84	.19	.09	.13	.41	.28	120
300TP	300 - 6	5/16"	2.00	1.13	.99	.38	1.00	.25	.09	.19	.49	.44	330
350TP	350 - 6	5/16"	2.25	1.13	.99	.50	1.25	.25	.09	.19	.63	.34	400
600TP	600 - 2	3/8"	3.18	1.51	1.38	.88	1.93	.38	.09	.19	.63	.53	550



NOTES:

1. TIN PLATED 6061-T6511 ALUMINUM ALLOY.
2. UL LISTED 90° C FOR COPPER AND ALUMINIUM CONDUCTOR.

nsi INDUSTRIES			
PROPRIETARY AND CONFIDENTIAL		TITLE: NSI TURN PREVENT LUG SERIES	
NAME	DATE	DWG. NO.	
DRAWN BY	DATE	TITLE:	
KM	4/13/2011	NSI TP LUG SERIES	
MATERIAL: 6061-T6511 ALUMINUM		SCALE: 1:1	SHEET: 1 OF 1